

CULTURED MARBLE

ARSTAR are meticulously designed to offer an optimal solution for a menity storage and shower or tub space organization.

Choosing the right shower is a vital element in leaving a positive impression of your property.

Explore this page to discover a collection of stylish, low-maintenance, and robust shower systems that will create an exceptional impression of your bathrooms.



Key Features:

- Crafted from cultured marble, ensuring long-lasting durability and ease of cleaning.
- Seamlessly integrates with our cast marble panel systems, creating a cohesive and harmonious aesthetic.
- Boasts a permanently sealed surface, enhancing both its longevity and hygiene.
- Features a solid, one-piece construction, guaranteeing structural integrity and reliability.

3096-6096-BW

TECHNICAL DATA SHEET

3" x 6" Subway Tile Wall Surround Cultured Marble

FEATURES

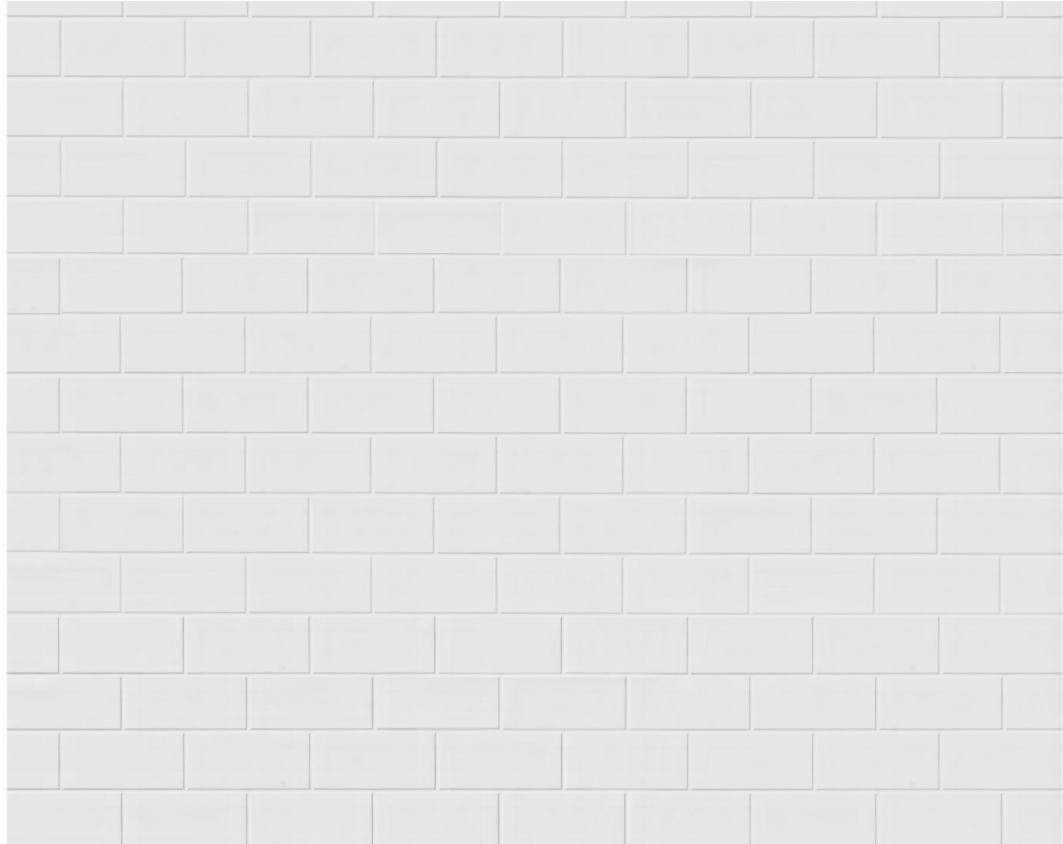
Individual 'brick' size: 3" x 6"
Up to 96" max height
Back wall: up to 60" max width
Side walls: up to 36" max width
Nominal thickness $\frac{5}{16}$ "
(+/- $\frac{1}{16}$ " variance)
Gloss finish
Minimum order quantities apply

OPTIONAL ACCESORIES

2 $\frac{1}{4}$ " X up to 96" x $\frac{3}{4}$ " trim strips
Soap dishes
Shampoo shelves
Foot rests
Additional accesories available upon
request (minimum quantities apply)

STANDARDS AND RATINGS

Typical CSI Code: 06 61 13
(Div 06)
ANSI



Kit Includes

2 side panels
1 back panel

Material to be stacked on A-Frames

Optional Finishes



Cultured Marble



Cultured Granite

3096-6096-BW

3" x 6" Subway Tile Wall Surround Cultured Marble

FEATURES

Dimensional Tolerance $\pm \frac{1}{8}$ ".
Dimensions needed for site preparation should be measured from the unit.

Type and Model

Wall Surround 3096-6096-BW

Material

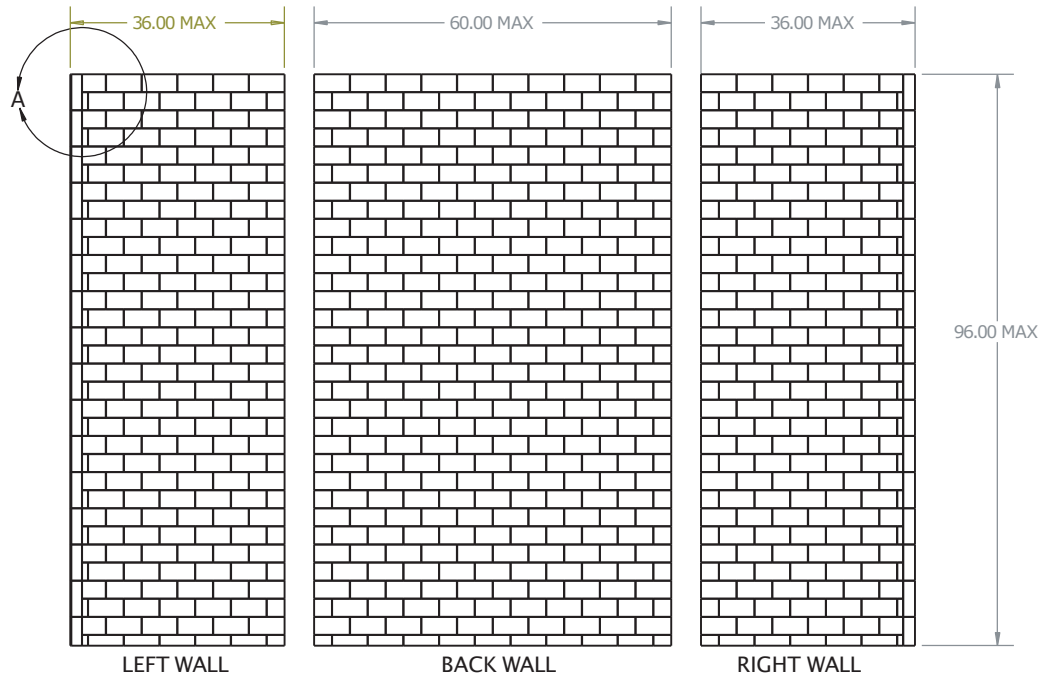
Engineered Stone

Wall Finish

Subway 3" x 6"

Pieces

3



DIMENSIONS

Side wall width
Up to 36"

Back wall width
Up to 60"

Height
Up to 96"

Tile Pattern
Subway 3" x 6"

Other Colors



Frost Chrome



Latte



Mercurio



Chrome Galaxy



Gold Stone



Latte Gold

3096-6096-12 x 24

12" x 24" Brick Tile Wall
Surround Cultured
Marble*FEATURES*

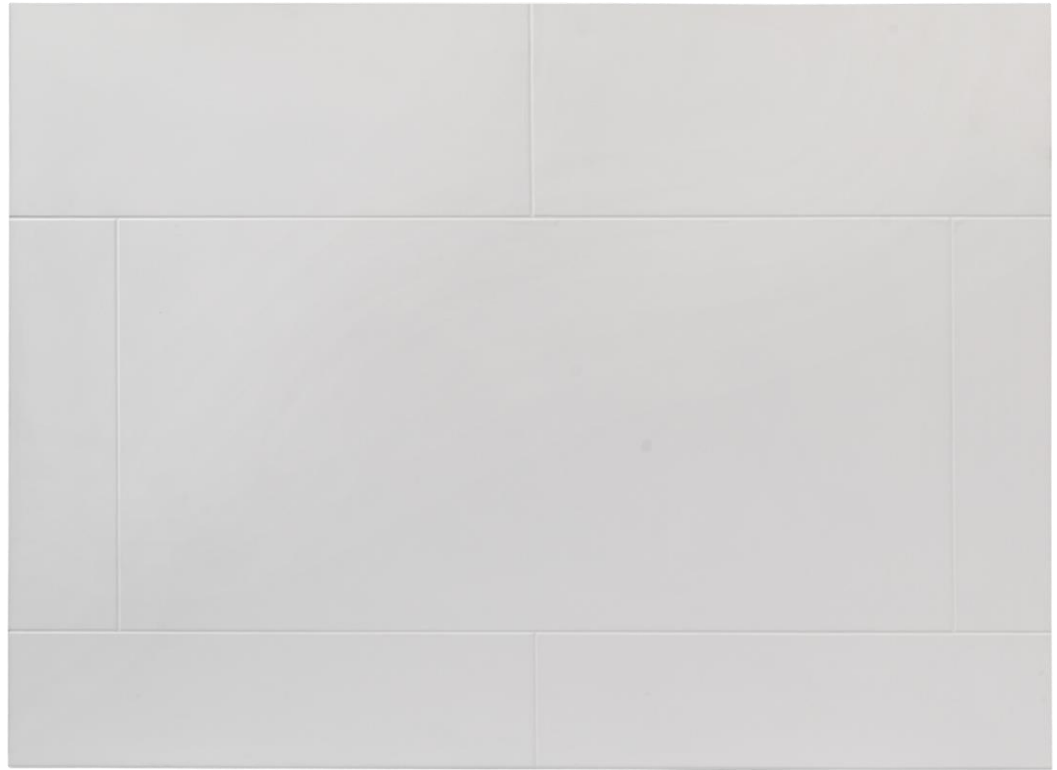
Individual 'brick' size: 12" x 24"
 Up to 96" max height
 Back wall: up to 60" max width
 Side walls: up to 36" max width
 Nominal thickness $\frac{5}{16}$ "
 (+/- $\frac{1}{16}$ " variance)
 Gloss finish
 Minimum order quantities apply

OPTIONAL ACCESORIES

2 $\frac{1}{4}$ " X up to 96" x $\frac{3}{4}$ " trim strips
 Soap dishes
 Shampoo shelves
 Foot rests
 Additional accesories available upon
 request (minimum quantities apply)

STANDARDS AND RATINGS

Typical CSI Code: 06 61 13
 (Div 06)
 ANSI

*Kit Includes*

2 side panels
 1 back panel

Material to be stacked on A-Frames

Optional Finishes

Cultured Marble



Cultured Granite

3096-6096-12 x 24

12" x 24" Brick Tile Wall Surround Cultured Marble

FEATURES

Dimensional Tolerance $\pm \frac{1}{8}$ ".
Dimensions needed for site preparation should be measured from the unit.

Type and Model

Wall Surround 3096-6096-12 x 24

Material

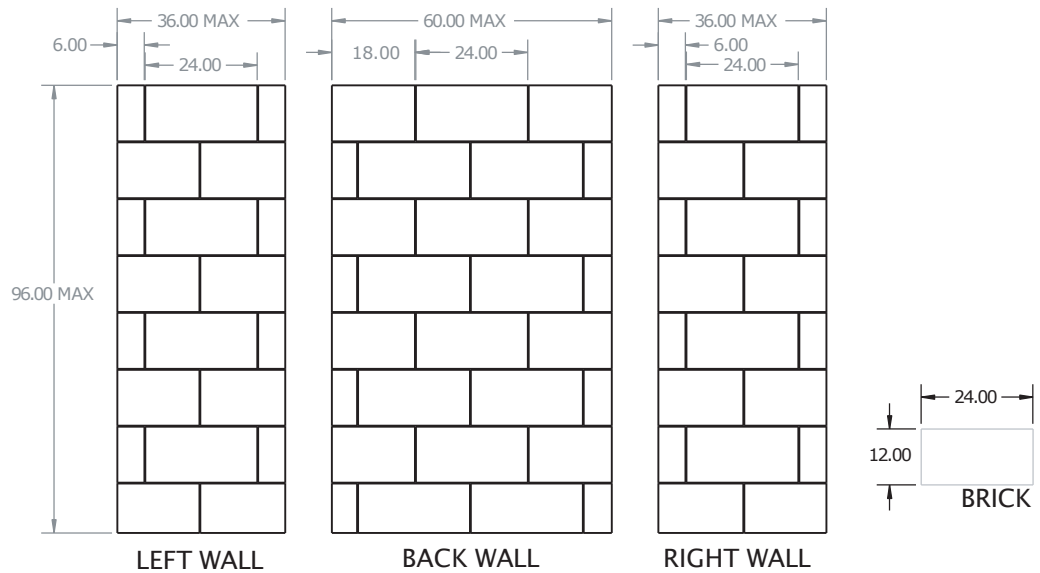
Engineered Stone

Wall Finish

Brick 12" x 24"

Pieces

3



DIMENSIONS

Side wall width

Up to 36"

Back wall width

Up to 60"

Height

Up to 96"

Tile Pattern

Brick 12" x 24"

Other Colors



Frost Chrome



Latte



Mercurio



Chrome Galaxy



Gold Stone



Latte Gold

3096-6096-6 x 24

6" x 24" Brick Tile Wall Surround Cultured Marble

FEATURES

Individual 'brick' size: 6" x 24"
Up to 96" max height
Back wall: up to 60" max width
Side walls: up to 36" max width
Nominal thickness $\frac{5}{16}$ "
(+/- $\frac{1}{16}$ " variance)
Gloss finish
Minimum order quantities apply

OPTIONAL ACCESORIES

2 $\frac{1}{4}$ " X up to 96" x $\frac{3}{4}$ " trim strips
Soap dishes
Shampoo shelves
Foot rests
Additional accesories available upon
request (minimum quantities apply)

STANDARDS AND RATINGS

Typical CSI Code: 06 61 13
(Div 06)
ANSI



Kit Includes

2 side panels
1 back panel

Material to be stacked on A-Frames

Optional Finishes



Cultured Marble



Cultured Granite

3096-6096-6 x 24

6" x 24" Brick Tile Wall
Surround Cultured
Marble

FEATURES

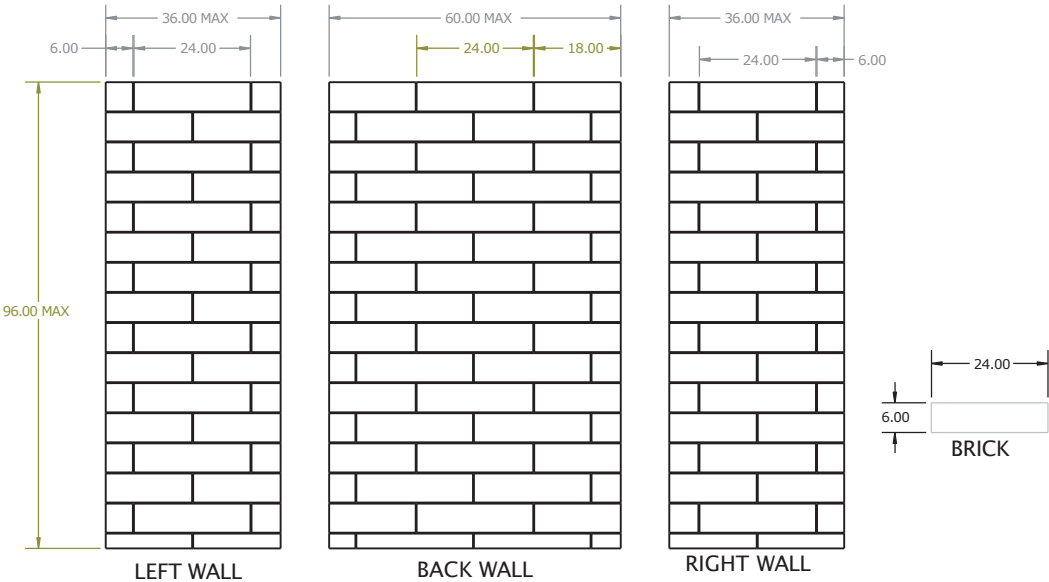
Dimensional Tolerance $\pm\frac{1}{8}$ ".
Dimensions needed for site preparation
should be measured from the unit.

Type and Model #
Wall Surround 3096-6096-6 x 24

Material
Engineered Stone

Wall Finish
Brick 6" x 24"

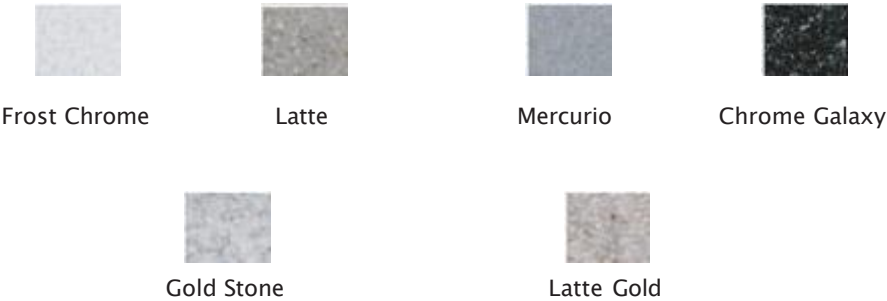
Pieces
3



DIMENSIONS

Side wall width Up to 36"	Back wall width Up to 60"	Height Up to 96"	Tile Pattern Brick 6" x 24"
------------------------------	------------------------------	---------------------	--------------------------------

Other Colors



3096-6096-6 x 24T

6" x 24" Textured Brick
Tile Wall*FEATURES*

Individual 'brick' size: 6" x 24" T
 Up to 96" max height
 Back wall: up to 60" max width
 Side walls: up to 36" max width
 Nominal thickness $\frac{5}{16}$ "
 (+/- $\frac{1}{16}$ " variance)
 Gloss finish
 Minimum order quantities apply

OPTIONAL ACCESORIES

2 $\frac{1}{4}$ " X up to 96" x $\frac{3}{4}$ " trim strips
 Soap dishes
 Shampoo shelves
 Foot rests
 Additional accesories available upon
 request (minimum quantities apply)

STANDARDS AND RATINGS

Typical CSI Code: 06 61 13
 (Div 06)
 ANSI

*Kit Includes*

2 side panels
 1 back panel

Material to be stacked on A-Frames

Optional Finishes

Cultured Marble



Cultured Granite

3096-6096-6 x 24T

6" x 24" Textured Brick Tile Wall

FEATURES

Dimensional Tolerance $\pm\frac{1}{8}$ ".
Dimensions needed for site preparation
should be measured from the unit.

Type and Model

Wall Surround 3096-6096-6 x 24 T

Material

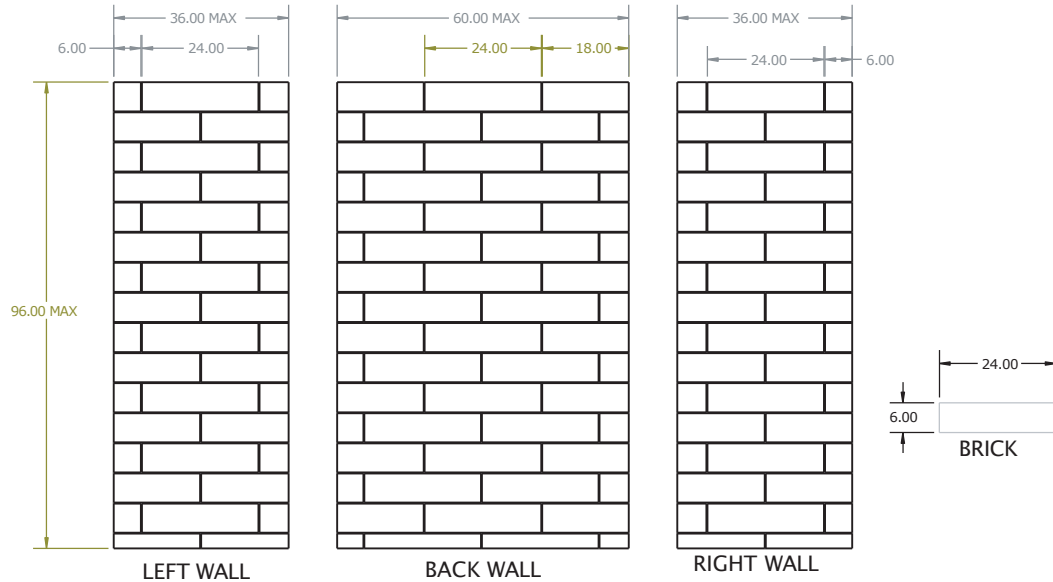
Engineered Stone

Wall Finish

Brick 6" x 24" Textured

Pieces

3



DIMENSIONS

Side wall width

Up to 36"

Back wall width

Up to 60"

Height

Up to 96"

Tile Pattern

Brick 6" x 24"

Other Colors



Frost Chrome



Latte



Mercurio



Chrome Galaxy



Gold Stone



Latte Gold

3096-6096-BW

TECHNICAL DATA SHEET

Chevron Wall Surround Cultured Marble

FEATURES

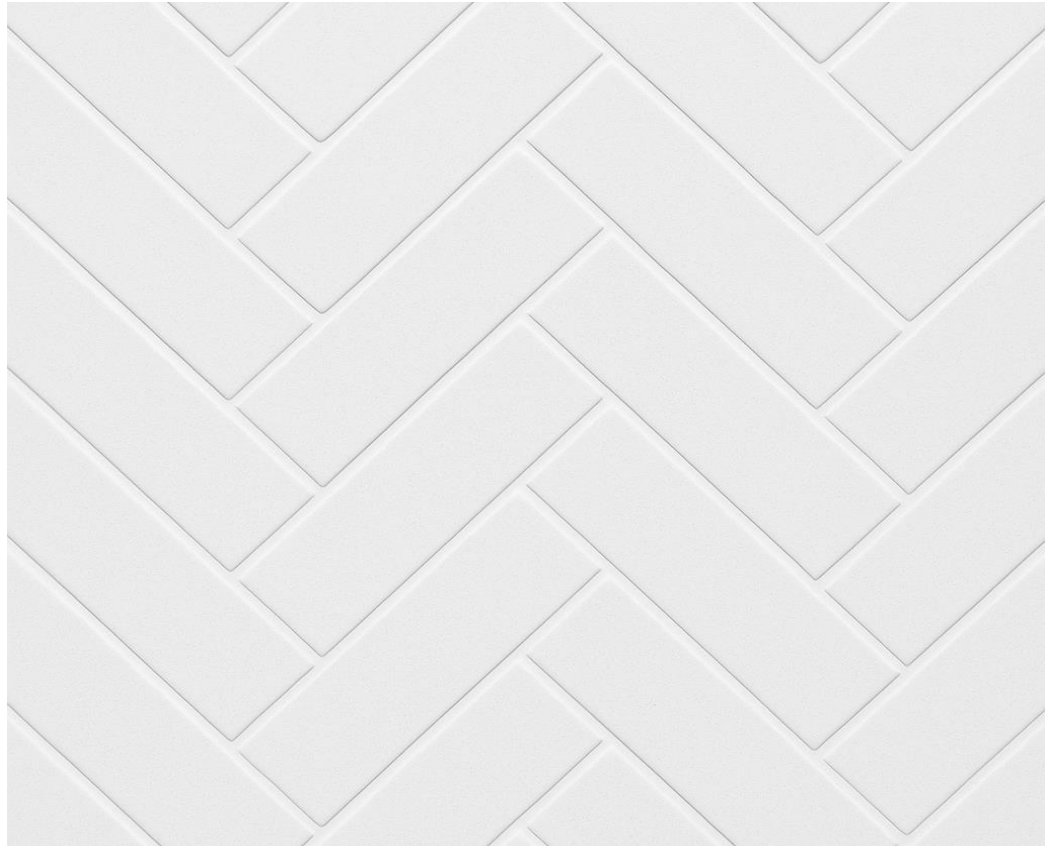
Chevron style
Up to 96" max height
Back wall: up to 60" max width
Side walls: up to 36" max width
Nominal thickness $\frac{5}{16}$ "
(+/- $\frac{1}{16}$ " variance)
Matt finish
Minimum order quantities apply

OPTIONAL ACCESORIES

2 $\frac{1}{4}$ " X up to 96" x $\frac{3}{4}$ " trim strips
Soap dishes
Shampoo shelves
Foot rests
Additional accesories available upon
request (minimum quantities apply)

STANDARDS AND RATINGS

Typical CSI Code: 06 61 13
(Div 06)
ANSI



Kit Includes

2 side panels
1 back panel

Material to be stacked on A-Frames

Optional Finishes



Cultured Marble



Cultured Granite

3636-SP-C

36" x 36" Shower Pan Center Cultured Marble

FEATURES

- Center Drain
- Resistant to mold and mildew
- Backwall: 36" Sidewalls 36"
- Center of drain measures: 18" from backwall, 18" from side wall
- Pre-leveled for seamless installation
- User-friendly installation
- Hassle-free maintenance
- Gloss and Matte Finish
- Minimum order quantities apply

STANDARDS AND RATINGS

- Typical CSI Code: 06 61 13
- (Div 06)
- ANSI
- IAPMO



Optional Finishes



Cultured Marble



Cultured Granite

3636-SP-C

36" x 36" Shower Pan Center Cultured Marble

FEATURES

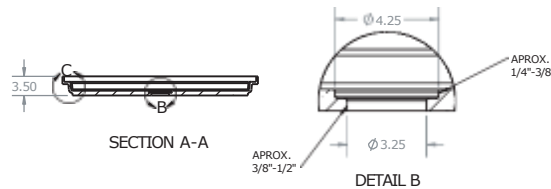
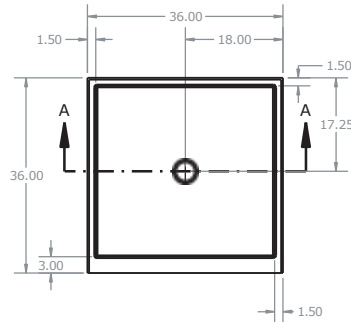
Dimensional Tolerance $\pm 1/8"$.
Dimensions needed for site preparation
should be measured from the unit.

Type and Model #
Shower Pan 3636-SP-C

Material
Engineered Stone

Shower Pan Finish
Textured, Anti Slip

Pieces
1



DIMENSIONS

Side wall width
36" Max

Back wall width
36" Max

Height
3.5" Total

Floor Finish
Textured, Anti Slip

Other Colors



Frost Chrome



Latte



Mercurio



Chrome Galaxy



Gold Stone



Latte Gold

3648-SP-C**36" x 48" Shower Pan Center
Cultured Marble***FEATURES*

Center Drain
Resistant to mold and mildew
Backwall: 48" Sidewalls 36"
Center of drain measures: 18" from
backwall, 24" from side wall
Pre-leveled for seamless installation
User-friendly installation
Hassle-free maintenance
Gloss and Matte Finish
Minimum order quantities apply

STANDARDS AND RATINGS

Typical CSI Code: 06 61 13
(Div 06)
ANSI
IAPMO

*Optional Finishes*

Cultured Marble



Cultured Granite

3648-SP-C

36" x 48" Shower Pan Center Cultured Marble

FEATURES

Dimensional Tolerance $\pm 1/8"$.
Dimensions needed for site preparation
should be measured from the unit.

Type and Model

Shower Pan 3648-SP-C

Material

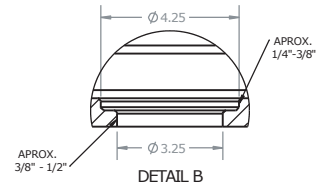
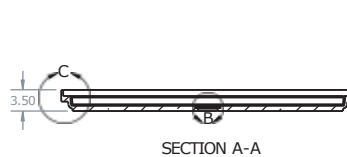
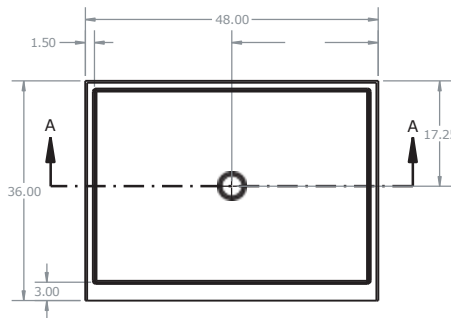
Engineered Stone

Shower Pan Finish

Textured, Anti Slip

Pieces

1



DIMENSIONS

Side wall width
36" Max

Back wall width
48" Max

Height
3.5" Total

Floor Finish
Textured, Anti Slip

Other Colors



Frost Chrome



Latte



Mercurio



Chrome Galaxy



Gold Stone



Latte Gold

3660-SP-R

36" x 60" Shower Pan Right Cultured Marble

FEATURES

- Right Drain
- Resistant to mold and mildew
- Backwall: 60" Sidewalls 36"
- Center of drain measures: 10.13" from backwall, 8.13" from sidewall
- Pre-leveled for seamless installation
- User-friendly installation
- Hassle-free maintenance
- Gloss and Matte Finish
- Minimum order quantities apply

STANDARDS AND RATINGS

- Typical CSI Code: 06 61 13
- (Div 06)
- ANSI
- IAPMO



Optional Finishes



Cultured Marble



Cultured Granite

3660-SP-R

36" x 60" Shower Pan Right Cultured Marble

FEATURES

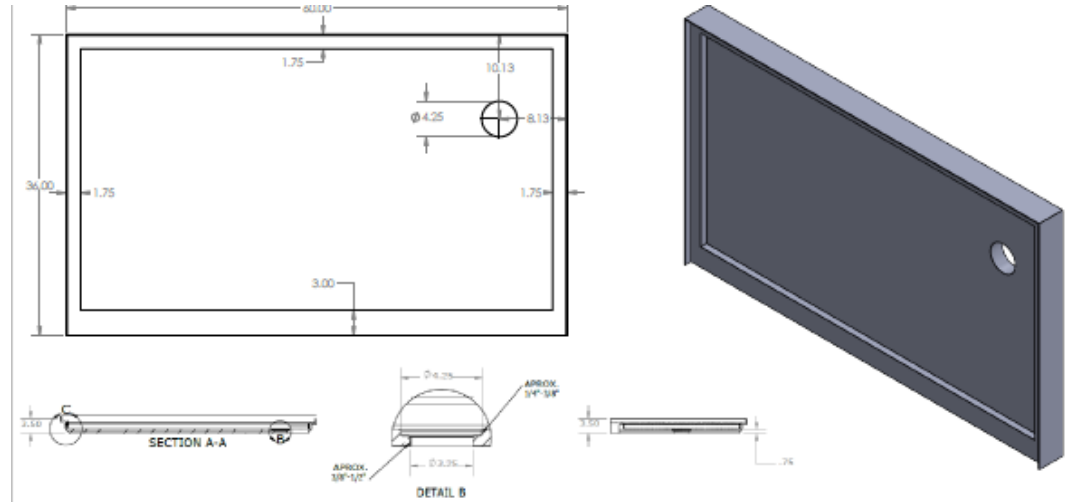
Dimensional Tolerance $\pm 1/8"$.
Dimensions needed for site preparation
should be measured from the unit.

Type and Model #
Shower Pan 3660-SP-R

Material
Engineered Stone

Shower Pan Finish
Textured, Anti Slip

Pieces
1



DIMENSIONS

Side wall width
36" Max

Back wall width
60" Max

Height
3.5" Total

Floor Finish
Textured, Anti Slip

Other Colors



Frost Chrome



Latte



Mercurio



Chrome Galaxy



Gold Stone



Latte Gold

3260-SP-C

32" x 60" Shower Pan Center Cultured Marble

FEATURES

Center Drain
Resistant to mold and mildew
Backwall: 60" Sidewalls 32"
Center of drain measures: 16" from
backwall, 30" from side wall
Pre-leveled for seamless installation
User-friendly installation
Hassle-free maintenance
Gloss and Matte Finish
Minimum order quantities apply

STANDARDS AND RATINGS

Typical CSI Code: 06 61 13
(Div 06)
ANSI
IAPMO



Optional Finishes



Cultured Marble



Cultured Granite

3260-SP-C

32" x 60" Shower Pan Center Cultured Marble

FEATURES

Dimensional Tolerance $\pm 1/8"$.
Dimensions needed for site preparation
should be measured from the unit.

Type and Model

Shower Pan 3260-SP-C

Material

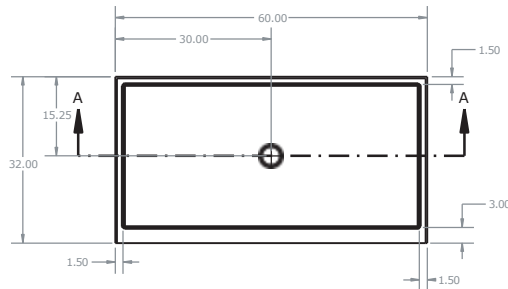
Engineered Stone

Shower Pan Finish

Textured, Anti Slip

Pieces

1



SECTION A-A
SCALE 1 : 18



DIMENSIONS

Side wall width

32" Max

Back wall width

60" Max

Height

3.5" Total

Floor Finish

Textured, Anti Slip

Other Colors



Frost Chrome



Latte



Mercurio



Chrome Galaxy



Gold Stone



Latte Gold

3260-SP-R

32" x 60" Shower Pan Right Cultured Marble

FEATURES

Right Drain
Resistant to mold and mildew
Backwall: 60" Sidewalls 32"
Center of drain measures: 16" from
backwall, 8.44" from sidewall
Pre-leveled for seamless installation
User-friendly installation
Hassle-free maintenance
Gloss and Matte Finish
Minimum order quantities apply

STANDARDS AND RATINGS

Typical CSI Code: 06 61 13
(Div 06)
ANSI
IAPMO



Optional Finishes



Cultured Marble



Cultured Granite

3260-SP-R

32" x 60" Shower Pan Right Cultured Marble

FEATURES

Dimensional Tolerance $\pm \frac{1}{8}$ ".
Dimensions needed for site preparation
should be measured from the unit.

Type and Model

Shower Pan 3260-SP-R

Material

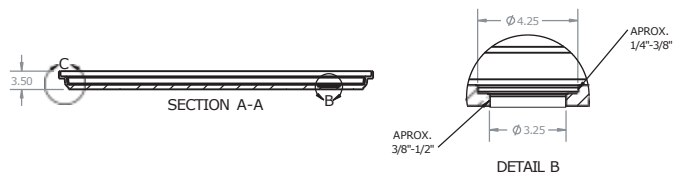
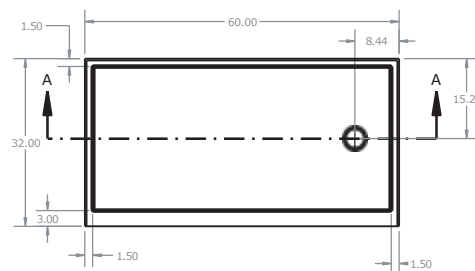
Engineered Stone

Shower Pan Finish

Textured, Anti Slip

Pieces

1



DIMENSIONS

Side wall width
32" Max

Back wall width
60" Max

Height
3.5" Total

Floor Finish
Textured, Anti Slip

Other Colors



Frost Chrome



Latte



Mercurio



Chrome Galaxy



Gold Stone



Latte Gold

3260-SP-L

32" x 60" Shower Pan Left Cultured Marble

FEATURES

Left Drain
Resistant to mold and mildew
Backwall: 60" Sidewalls 32"
Center of drain measures: 16" from
backwall, 8.44" from left sidewall
Pre-leveled for seamless installation
User-friendly installation
Hassle-free maintenance
Gloss and Matte Finish
Minimum order quantities apply

STANDARDS AND RATINGS

Typical CSI Code: 06 61 13
(Div 06)
ANSI
IAPMO



Optional Finishes



Cultured Marble



Cultured Granite

3260-SP-L

32" x 60" Shower Pan Left Cultured Marble

FEATURES

Dimensional Tolerance $\pm 1/8"$.
Dimensions needed for site preparation
should be measured from the unit.

Type and Model

Shower Pan 3260-SP-L

Material

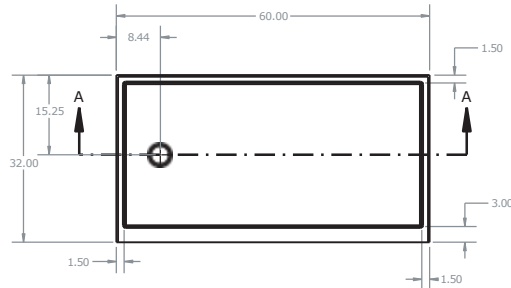
Engineered Stone

Shower Pan Finish

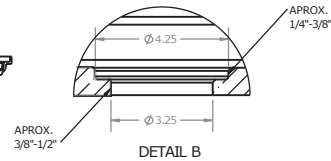
Textured, Anti Slip

Pieces

1



SECTION A-A
SCALE 1 : 18



DETAIL B

DIMENSIONS

Side wall width
32" Max

Back wall width
60" Max

Height
3.5" Total

Floor Finish
Textured, Anti Slip

Other Colors



Frost Chrome



Latte



Mercurio



Chrome Galaxy



Gold Stone



Latte Gold

3060-SP-C

30" x 60" Shower Pan Center Cultured Marble

FEATURES

- Center Drain
- Resistant to mold and mildew
- Backwall: 60" Sidewalls 30"
- Center of drain measures: 15" from backwall, 30" from side wall
- Pre-leveled for seamless installation
- User-friendly installation
- Hassle-free maintenance
- Gloss and Matte Finish
- Minimum order quantities apply

STANDARDS AND RATINGS

Typical CSI Code: 06 61 13
(Div 06)
ANSI
IAPMO



Optional Finishes



Cultured Marble



Cultured Granite

3060-SP-C

30" x 60" Shower Pan Center Cultured Marble

FEATURES

Dimensional Tolerance $\pm 1/8"$.
Dimensions needed for site preparation
should be measured from the unit.

Type and Model

Shower Pan 3060-SP-C

Material

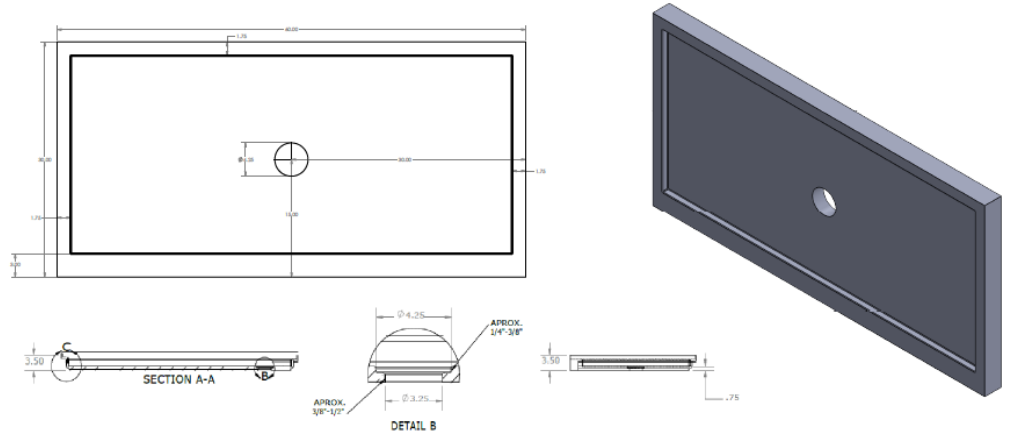
Engineered Stone

Shower Pan Finish

Textured, Anti Slip

Pieces

1



DIMENSIONS

Side wall width
30" Max

Back wall width
60" Max

Height
3.5" Total

Floor Finish
Textured, Anti Slip

Other Colors



Frost Chrome



Latte



Mercurio



Chrome Galaxy



Gold Stone



Latte Gold

3060-SP-R

30" x 60" Shower Pan Right Cultured Marble

FEATURES

- Center Drain
- Resistant to mold and mildew
- Backwall: 60" Sidewalls 30"
- Center of drain measures: 10.13" from backwall, 8.13" from side wall
- Pre-leveled for seamless installation
- User-friendly installation
- Hassle-free maintenance
- Gloss and Matte Finish
- Minimum order quantities apply

STANDARDS AND RATINGS

Typical CSI Code: 06 61 13
(Div 06)
ANSI
IAPMO



Optional Finishes



Cultured Marble



Cultured Granite

3060-SP-R

30" x 60" Shower Pan Right Cultured Marble

FEATURES

Dimensional Tolerance $\pm 1/8"$.
Dimensions needed for site preparation should be measured from the unit.

Type and Model

Shower Pan 3060-SP-R

Material

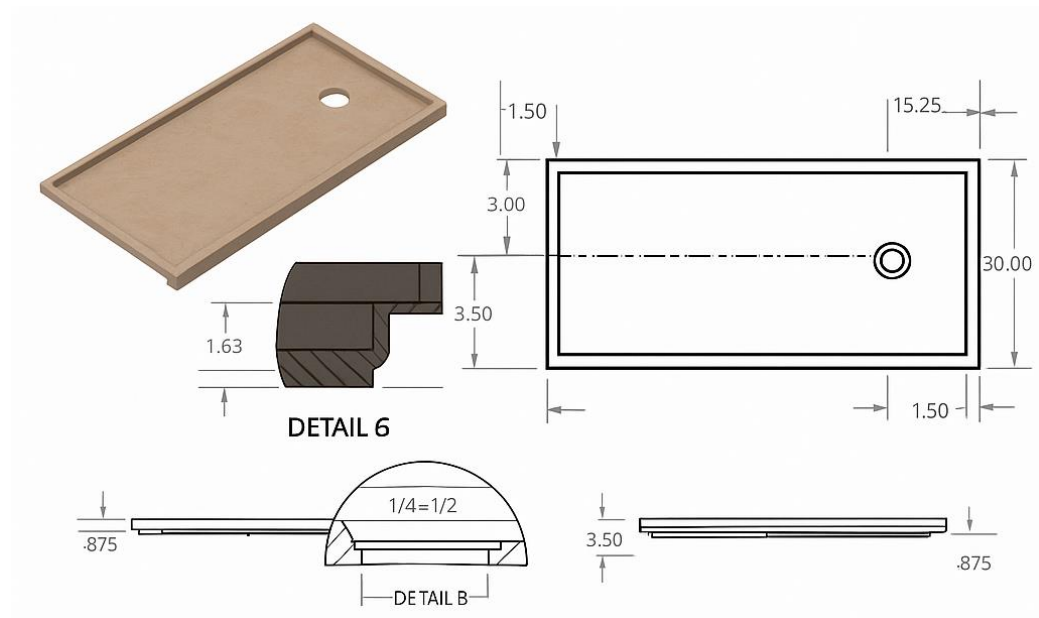
Engineered Stone

Shower Pan Finish

Textured, Anti Slip

Pieces

1



DIMENSIONS

Side wall width

30" Max

Back wall width

60" Max

Height

3.5" Total

Floor Finish

Textured, Anti Slip

Other Colors



Frost Chrome



Latte



Mercurio



Chrome Galaxy



Gold Stone



Latte Gold

3060-SP-L

30" x 60" Shower Pan Left Cultured Marble

FEATURES

Center Drain
Resistant to mold and mildew
Backwall: 60" Sidewalls 30"
Center of drain measures: 10.13"
from backwall, 8.13" from side wall
Pre-leveled for seamless installation
User-friendly installation
Hassle-free maintenance
Gloss and Matte Finish
Minimum order quantities apply

STANDARDS AND RATINGS

Typical CSI Code: 06 61 13
(Div 06)
ANSI
IAPMO



Optional Finishes



Cultured Marble



Cultured Granite

3060-SP-L

30" x 60" Shower Pan Left Cultured Marble

FEATURES

Dimensional Tolerance $\pm 1/8"$.
Dimensions needed for site preparation
should be measured from the unit.

Type and Model

Shower Pan 3060-SP-L

Material

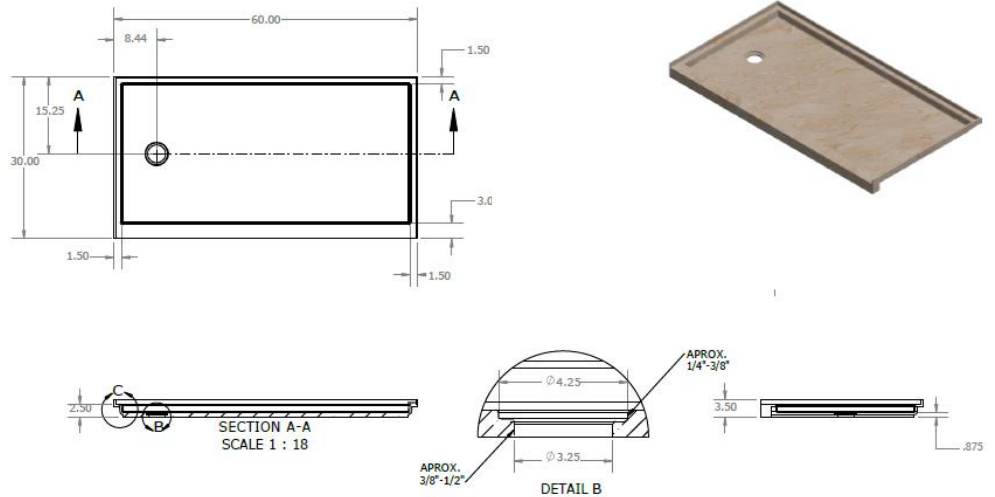
Engineered Stone

Shower Pan Finish

Textured, Anti Slip

Pieces

1



DIMENSIONS

Side wall width
30" Max

Back wall width
60" Max

Height
3.5" Total

Floor Finish
Textured, Anti Slip

Other Colors



Frost Chrome



Latte



Mercurio



Chrome Galaxy



Gold Stone



Latte Gold

3060-SP-R

30" x 60" Shower Pan Right Trench Drain Cultured Marble

FEATURES

Center Drain
Resistant to mold and mildew
Backwall: 60" Sidewalls 30"
Center of drain measures: 10.13"
from backwall, 8.13" from side wall
Pre-leveled for seamless installation
User-friendly installation
Hassle-free maintenance
Gloss and Matte Finish
Minimum order quantities apply

STANDARDS AND RATINGS

Typical CSI Code: 06 61 13
(Div 06)
ANSI
IAPMO



Optional Finishes



Cultured Marble



Cultured Granite

3060-SP-R

30" x 60" Shower Pan Right Cultured Marble

FEATURES

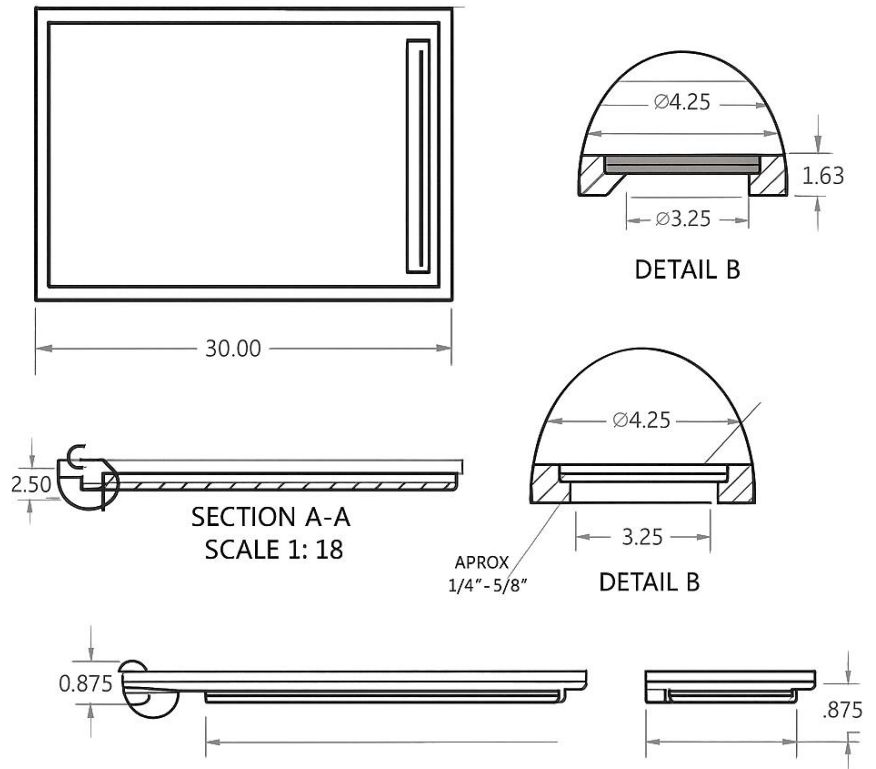
Dimensional Tolerance $\pm 1/8"$.
Dimensions needed for site preparation should be measured from the unit.

Type and Model #
Shower Pan 3060-SP-R

Material
Engineered Stone

Shower Pan Finish
Textured, Anti Slip

Pieces
1



DIMENSIONS

Side wall width
30" Max

Back wall width
60" Max

Height
3.5" Total

Floor Finish
Textured, Anti Slip

Other Colors



Frost Chrome



Latte



Mercurio



Chrome Galaxy



Gold Stone



Latte Gold

3060-SP-R

30" x 60" Shower Pan Left Trench Drain Cultured Marble

FEATURES

Center Drain
Resistant to mold and mildew
Backwall: 60" Sidewalls 30"
Center of drain measures: 10.13"
from backwall, 8.13" from side wall
Pre-leveled for seamless installation
User-friendly installation
Hassle-free maintenance
Gloss and Matte Finish
Minimum order quantities apply

STANDARDS AND RATINGS

Typical CSI Code: 06 61 13
(Div 06)
ANSI
IAPMO



Optional Finishes



Cultured Marble



Cultured Granite

3060-SP-L

30" x 60" Shower Pan Left Cultured Marble

FEATURES

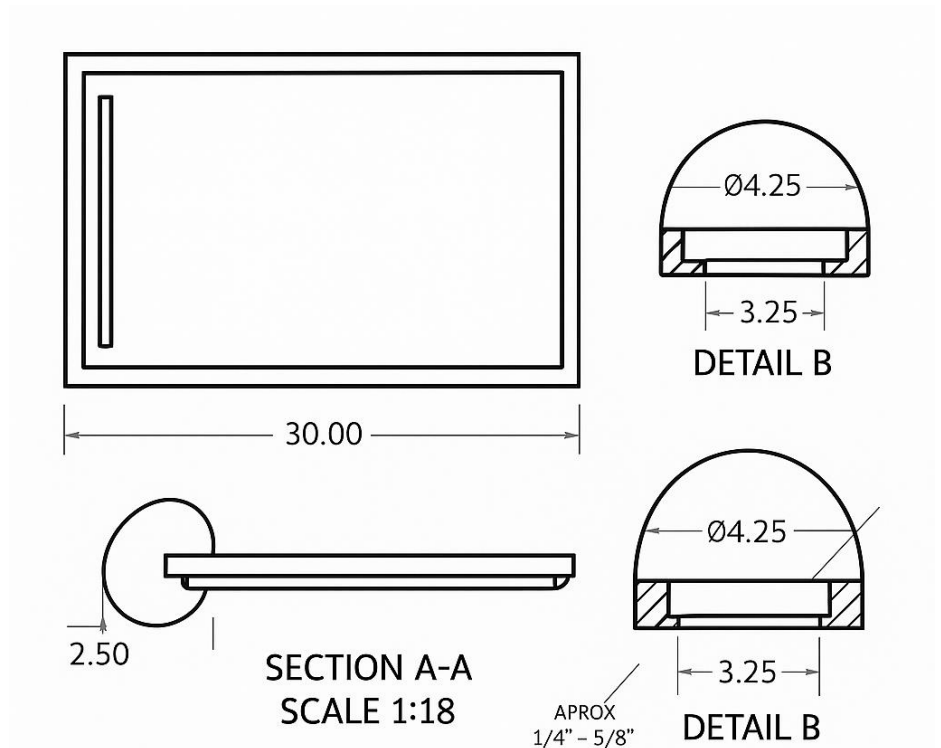
Dimensional Tolerance $\pm 1/8"$.
Dimensions needed for site preparation
should be measured from the unit.

Type and Model #
Shower Pan 3060-SP-L

Material
Engineered Stone

Shower Pan Finish
Textured, Anti Slip

Pieces
1



DIMENSIONS

Side wall width
30" Max

Back wall width
60" Max

Height
3.5" Total

Floor Finish
Textured, Anti Slip

Other Colors



Frost Chrome



Latte



Mercurio



Chrome Galaxy



Gold Stone



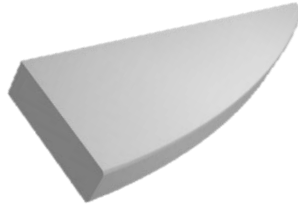
Latte Gold

CULTURED MARBLE ACCESORIES

*Soap Ledge
ARS-STP*



*Foot Rest
ARS-CFR*



*Cornered Soap
Ledge
ARS-CSL*



*Trim Strip
Piece ARS-AT*



ARSTAR cultured marble,
the ideal choice for
commercial spaces
that desire the opulent
appearance and texture
of tile or marble,
combined with effortless
maintenance and
exceptional durability.

Versatility

Consistency

Durability

Easy Maintenance

Cost-Effective

Customizability